

STATE OF MINNESOTA, } ss.
COUNTY OF MURRAY, }

I hereby certify that the within instrument
was filed in this office for record on the
30TH day of AUGUST A.D. 20 19
at 9:00 o'clock A M. and was duly
recorded as Document No. _____

Cecelyn C. Larson
County Recorder

Index No. PQ-25

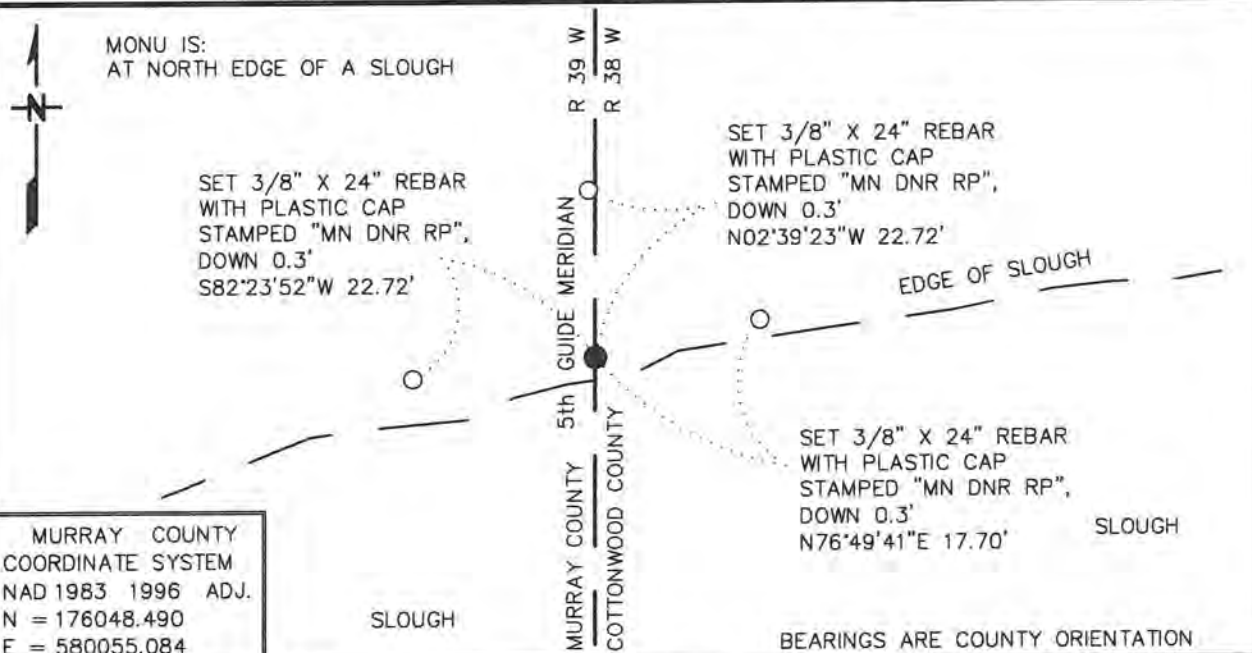
CERTIFICATE OF LOCATION OF GOVERNMENT CORNER

NUMBER 3 MEANDER Corner of Section 24, Township 107 N, Range 39 W

5TH Principal Meridian, State of Minnesota, County of MURRAY

At the corner location shown on the sketch:

- On 10/19/2017 found a PERFORATED STEEL TUBE WITH AN ALUMINUM CAP STAMPED
DATE "DNR SURVEY MARKER", SET INCORRECTLY IN 1985
 - left monument as found,
 - lowered monument,
 - removed monument (explain)
- On 11/22/2017 Reset PERFORATED STEEL TUBE WITH AN ALUMINUM CAP
DATE STAMPED "DNR SURVEY MARKER", FLUSH



Statement of evidence for this corner location is on back of this page.

APRIL 2018
WMA00745

I hereby certify that this plan, specification, or report was prepared by me or under my direct supervision and that I am a duly Licensed Land Surveyor under the laws of the State of Minnesota.

SIGNATURE Bruce W. Sheppard
BRUCE W. SHEPPARD

DATE 8/15/19

License Number 17003

Meander Corner Number 3 of Section 24, Township 107 North, Range 39 West

1985 November, Lowell R. Pommerening Jr., PLS 17005, with the Minnesota Department of Natural Resources filed a Certificate of Location of Government Corner for this corner in the Murray County Recorder's Office.

A Certificate of Location of Government Corner for this corner was recorded on November 14, 1985 in the Cottonwood County Recorder's Office as Document No. 188918, File 172 Card 2180, Microfilmed.

**FOR ADDITIONAL INFORMATION SEE THE ABOVE CERTIFICATES OF
LOCATION OF GOVERNMENT CORNER**

The DNR Division of Lands and Minerals contacted the following for survey information:

Website - mgeo.state.mn.us for GLO plat and field notes

Website - murray-countymn.com for section and quarter section corner information

Murray County Recorder's Office

Cottonwood County Recorder's Office

Zieske Land Surveying, Inc. of Windom

2017 October 19, the DNR Division of Lands and Minerals visited the area of the corner and found an aluminum cap stamped "D.N.R. SURVEY MARKER" on a perforated steel tube, up 0.1 of a foot. The aluminum capped perforated steel tube was found to be:

a) 7228.78 feet from the northeast corner of Section 36

b) 675.74 feet from the east quarter corner of Section 24

c) 1.04 feet east of a straight line from the northeast corner of Section 36 to the east quarter corner of Section 24

No evidence of a north-south fence was found in the area of the corner.

Analysis of the above information led the DNR Division of Lands and Minerals to conclude that the found aluminum cap stamped "D.N.R. SURVEY MARKER" on a perforated steel tube, is in the wrong location. So the lost position for the corner was computed by using the northeast corner of Section 36 and the east quarter corner of Section 24 and was found to be:

a) 7228.68 feet from the northeast corner of Section 36

b) 675.84 feet from the east quarter corner of Section 24

c) 0.09 of a foot south and 1.04 feet west of the found aluminum capped perforated steel tube

2017 November 22, the DNR Division of Lands and Minerals removed the found aluminum capped perforated steel tube and reset it at the above computed lost position and took ties to it as shown on the sketch of reference ties.